

*I have been involved with the Burleigh Street CDC since its inception.
This community continues to face the challenges and succeed.*

-PAM OZIMEK, VP/ BRANCH MANAGER, BMO HARRIS BANK

OUR MISSION

To advance the business environment in the Burleigh Street Commercial Corridor by conceiving and implementing economic development and community revitalization projects through the leverage of public-private partnerships with the city, county, state and federal governments, private investors, local corporations and foundations.

OUR PARTNERS

On behalf of the Sherman Park community and the businesses along the Burleigh Street Commercial Corridor, we offer deep gratitude to the partner organizations that support our mission. Because of their hard work and commitment, we have achieved great success and are moving toward an even more prosperous future.

Economic Development Partners: 30th Street Industrial Corridor Corporation, African American Chamber of Commerce, AJ Investments, Layton Boulevard West Neighbors, MarketPlace (BID 32), West Burleigh Business Improvement District (BID 27), Washington Park Partners.

Community Organizations: Auer Community, Common Ground, Norwood Neighborhood, Sherman Park Association of Religious Communities, Sherman Park Community Association, Tri-Block Neighborhood.

2011-2013 Funders: City of Milwaukee – CDBG, Helen Bader Foundation, Lynde and Harry Bradley Foundation, LISC Milwaukee, Nonprofit Management Fund, Wheaton Franciscan.

Other Stakeholders: Local First, Milwaukee Police District Seven, Nonprofit Center of Milwaukee, US Bank.

Lastly, but just as importantly, we recognize our dedicated volunteers and individual donors, to whom we extend our heartfelt thanks for their gifts of time and treasure.

To get involved, make a donation or for more information,
please contact our **Outreach Manager Renée Lindner**
rlindner@burleighstreet.org ,414.447.7070 (w), or 414.614.7085 (m)

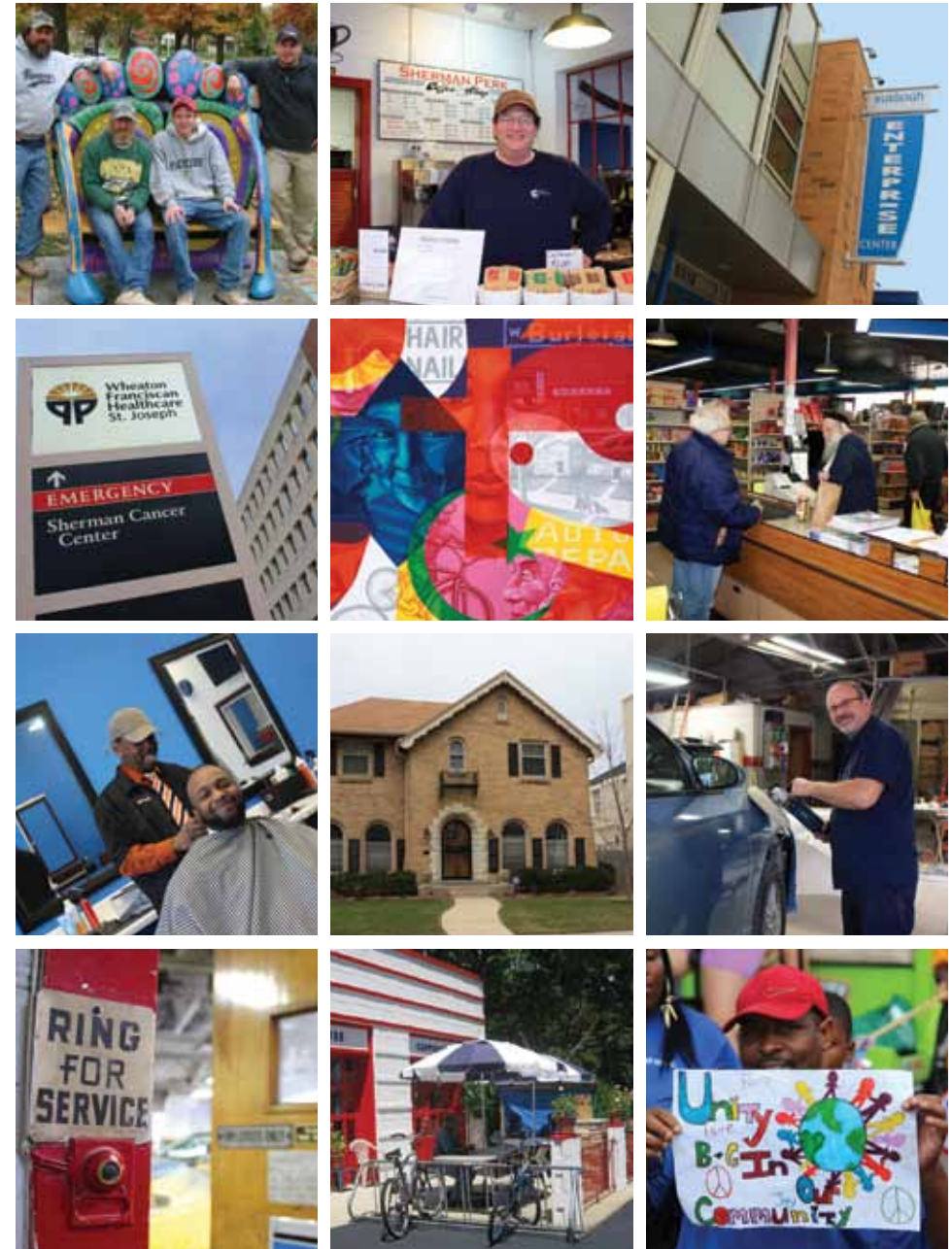


BURLEIGH STREET

Community Development Corporation

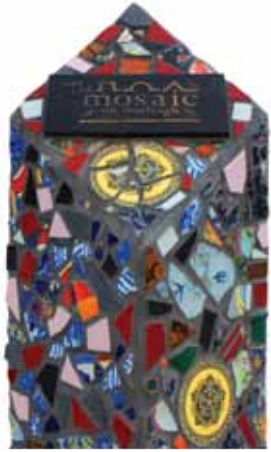
4630 W. Burleigh Street, Suite H. Milwaukee, WI 53210
www.burleighstreet.org

501(c)(3) tax exempt, non-profit corporation



BURLEIGH STREET

Community Development Corporation



OVERVIEW

Located in Milwaukee's Sherman Park neighborhood and running along Burleigh Street from Sherman Boulevard on the east to 60th Street on the west, the **Burleigh Street Commercial Corridor** is also known as "the Mosaic on Burleigh" for the variety of local businesses reflecting a community that welcomes many ethnicities and faiths.

Sherman Park has welcomed residents of remarkable diversity: European, African American, Hispanic, Middle Eastern, Asian and American Indian; Jewish, Christian and Muslim; long-time citizens and recent immigrants; blue-collar workers and professionals. Residents continue to enrich this stable, harmonious neighborhood.

In addition to its great diversity and the commitment of its residents, Sherman Park's assets include high-quality housing stock, historically significant buildings, responsible landlords, high-ranking public and private schools, religious institutions, government and social service agencies, and community-based organizations providing health care initiatives and support programs.

At the heart of the Burleigh Street Commercial Corridor stands one of Milwaukee's best corporate citizens, Wheaton Franciscan-St. Joseph Campus. A major neighborhood and business anchor, "St. Joe's" draws hundreds of people daily to its world-class health care facility.

For decades, Sherman Park's residents achieved prosperity for themselves and their families – working hard, running small businesses, owning homes in one of the keystone neighborhoods of Milwaukee. But economic recession hit the community fiercely, and too many neighbors lost their jobs, their businesses, and their homes.

I chose to move to Sherman Park ten years ago for its racial and socio-economic mix. Burleigh Street, our commercial corridor, is vital to the long-term success of the neighborhood.

JAMES PHELPS, CO-OWNER, JCP CONSTRUCTION

Ever resilient, the community is again moving forward. Capitalizing on the wonderful neighborhood assets, residents are building a prosperous future for Sherman Park and the Burleigh Street Commercial Corridor.

Leading revitalization efforts since 1999 is the Burleigh Street Community Development Corporation (Burleigh Street CDC), a coalition of people who live, worship, work and do business in the neighborhood. By convening our partners, which include the Sherman Park Community Association, West Burleigh Business Improvement District (BID #27), the City of Milwaukee and Milwaukee County, state and federal government, and private investors, local corporations, foundations, and block associations throughout Sherman Park, the Burleigh Street CDC is raising the quality of life in the neighborhood and revitalizing the Burleigh Street Commercial Corridor.

We're excited about our community and the growing vibrancy of our commercial corridor!



CORE AREAS

Burleigh Street CDC focuses its efforts on three core areas to promote commercial and community development.

1. Business and Economic Development

To maintain, create and attract businesses and jobs, Burleigh Street CDC works with a coalition of public, private, and community groups to provide technical assistance, sponsor business development seminars, assist in promotional activities, and connect business owners and job seekers with resources and opportunities.

2. Commercial Real Estate Development

To attract dedicated property owners and stable businesses, Burleigh Street CDC assesses neighbors' needs, compiles inventory of properties for sale or lease, and markets them to a larger audience. It also helps businesses open in the Burleigh Street Commercial Corridor by connecting business owners to resources.

In addition, Burleigh Street CDC identifies catalytic projects that will improve physical conditions and investment in the community. One such early-stage project is the Sherman Theater, a 1930s Art Deco building located at 4632 West Burleigh Street. The Theater will bring live entertainment back to the neighborhood, be a community gathering space, and provide commercial opportunities.

3. Community Relations

Strong relationships are the foundation of community and economic vitality. Burleigh Street CDC fosters relationship-building and collaboration among community members; attends neighborhood block group events; shares information about available jobs and commercial properties; and works in tandem with other economic development agencies throughout the city to promote the neighborhood's commercial assets.

Burleigh Street CDC is hard at work creating a community of choice and opportunity!

