

We see a Big World
waiting to be explored :)

The importance of connecting children with nature.



Childhood is a time of great curiosity and capacity for understanding. Children learn faster and acquire critical thinking skills as they engage with nature, where they explore, imagine, and discover. Through this process, children cultivate a passion for learning that will last a lifetime.

Children also have a basic need to establish an emotional connection to the natural world. A positive connection with nature deepens their sense of well-being and supports personal and psychological development and mental health.

A strong bond with nature will ultimately have a positive impact on the future of our children, our communities, and our world.

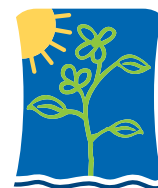
A child needs to delight in the shapes she sees in the clouds. A child needs to feel water on his face and the sand between his toes. A child needs to move from here to there, she needs to dig a hole.

~Elyssa Nelson

Executive Director – Outdoor Classroom Project



The TREE House is located at 2130 W. McKinley Avenue, just west of downtown, near the Milwaukee High School of the Arts and Marquette University.



MILWAUKEE TREE HOUSE

KEEP GREATER MILWAUKEE BEAUTIFUL

Children and Nature at Play

1313 W. Mount Vernon Avenue
Milwaukee WI 53233
414-272-5462 | F. 414-272-5060
www.kgmb.org



Keep Greater Milwaukee Beautiful is a 501(c)3, charitable organization.
All donations are tax-deductible.

Printing courtesy of JTS Direct - Hartland, WI. - www.jtsdirect.com

Do you see
what we see?





What can adults give their young that is more important than a warm and trusting connection to the Earth?

~Theodore Roszak – The Voice of the Earth

What is the TREE House and why are we building it?

The Milwaukee TREE House (Teach Responsible Environmental Education) is an environmental learning center for children and their families in one of Milwaukee's low-income, underserved urban areas.

Under development by *Keep Greater Milwaukee Beautiful (KGMB)*, an organization which has implemented community improvement and environmental education programs in the city since 1985, the TREE House program is an exciting expansion of KGMB's work.

Located in midtown Milwaukee, the TREE House will connect with Lynden Hill, an urban green space managed by KGMB that provides recreational, social, and environmental benefits to the surrounding community while offering extraordinary opportunities for learning.



Here's what the TREE House will do for our children and their communities:

- Through hands-on environmental education and interactive learning, the TREE House will foster exploration, creativity and personal development, and help improve social and academic skills.
- Before- and after-school programs and year-round programs will encourage children to continue learning, stay engaged with each other, and remain healthy and physically active outside of school.
- The TREE House programs will help build healthy communities by cultivating a love for the natural environment, bringing children and their families together, and fostering community pride and ownership.
- The programs will prepare children to become stewards of the natural world and take on the environmental challenges affecting our communities and the planet.

Key features of the TREE House

The TREE House building, at 2130 W. McKinley Avenue, was purchased by KGMB in 2012 thanks to donations from people like you. The remodeled TREE House will include:

Water Area – Children and visitors will learn about the water cycle and the value of water through interactive water management practices such as rain barrels and rain gardens.

Classrooms – Children will participate in educational workshops using a blend of natural materials and state-of-the-art technology.

Planting & Gardening Area – Children and their families will learn where food comes from and how to create and maintain their own gardens. The TREE House will be instrumental in building green, sustainable communities in Milwaukee.

Kitchen – Children and their families will participate in healthy cooking workshops using fresh produce and local ingredients.

Climbing & Crawling Area – Children will stay active and develop motor skills and coordination.

Music & Movement Area – Children will play and dance to the rhythms of nature and nature-inspired instruments.

Amphitheater – Children and their families will gather for concerts, lectures, exhibits, and more.



The TREE House Campaign... your gift to our children, our community, our future

Our goal is to raise \$1,000,000, in three phases:

Phase 1 – \$400,000

Build entry gate, canopy, and learning / activity areas.

Phase 2 – \$300,000

Renovate first-level reception area, kitchen, restrooms, two classrooms, and basement.

Phase 3 – \$300,000

Build two new classrooms, add additional basement space, second floor storage room, and staff office. Install solar panels and greywater system.



Your gift to the TREE House is one of the best investments you can make in our children, our community, and our future. By supporting our mission you are making a tangible difference.

To learn more about the TREE House or to make a donation to our campaign, please contact:

Troy Giles

Chair, Milwaukee TREE House Capital Campaign
tegiles@gilesengr.com - 262-719-1329

Joe Wilson

Executive Director, Keep Greater Milwaukee Beautiful
jwilson@kgmb.org - 414-272-5462 ext. 103

Every child needs a TREE House!



ENTRY GATE. The trellised canopy at the entrance compliments the Lynden Hill entrance. On each side, a variety of elements create a secure, attractive enclosure for the Explore Nature learning area.



EXPLORE NATURE. This area provides children with a fun, safe way to interact with nature. The greenhouse will be used to cultivate seeds and start plants that can later be relocated to the raised planter beds.



WATER AREA. The rainwater collected through a rain harvest system embedded in the new structure that will feed a trough enabling hands-on interaction with the water. The collected water will be used to supply the raised planter beds, for general landscaping needs, and for the water closet. These strategies of reuse will greatly reduce fresh water usage at the Milwaukee TREE House.